



# PUMP PERFORMANCE

H81 SRC Series

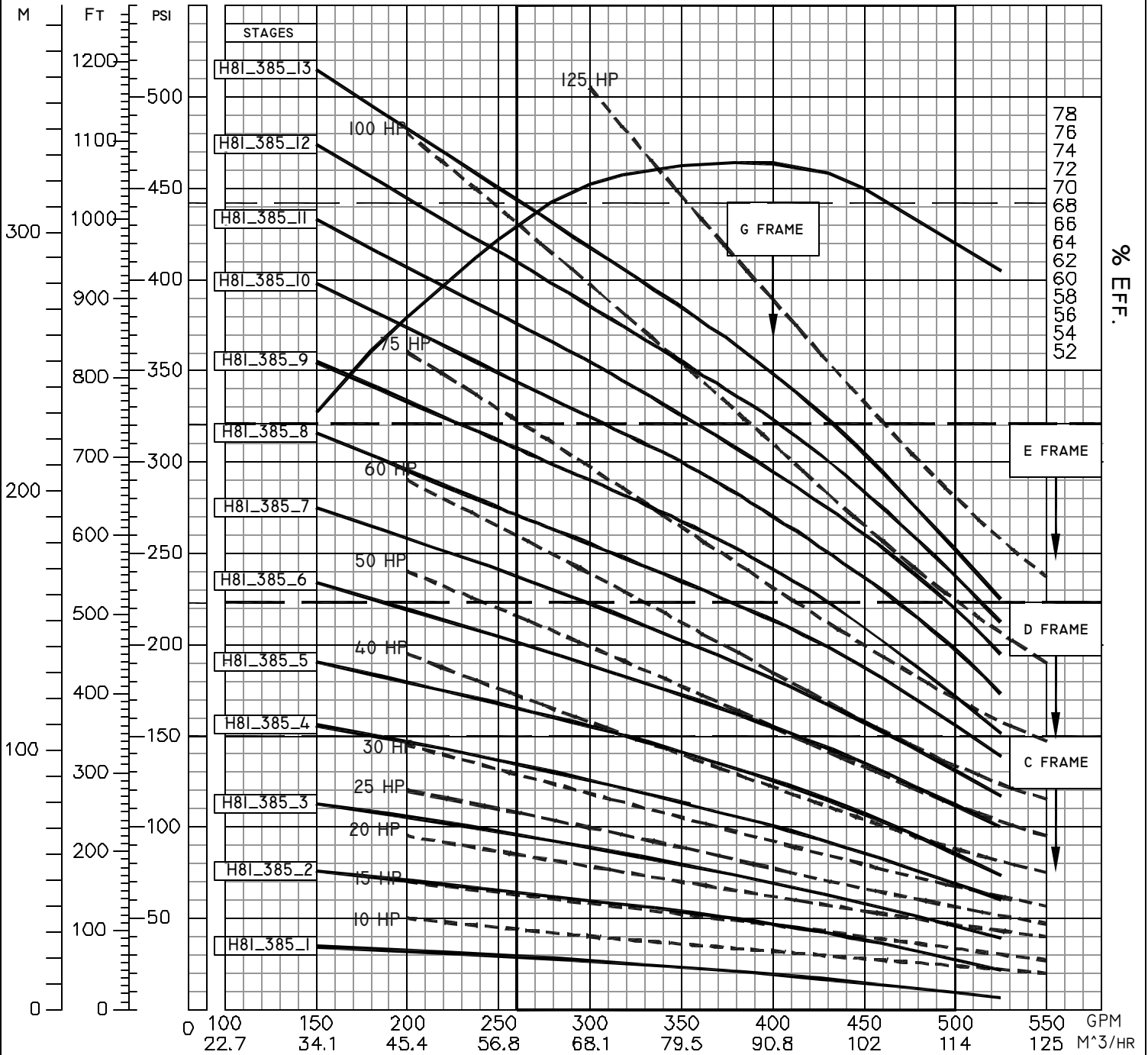
385 GPM #385

3600 RPM 460V 3 Ø 60HZ

FLOW RANGE: 260 - 500  
OPERATE WITHIN DESIGNATED  
AREA ONLY

$$HP = \frac{[GPM \times (PSI \times 2.31)]}{3960 \times \text{EFFICIENCY}}$$

IMPORTANT: 10 PSI MINIMUM INLET PRESSURE REQUIRED. FOR GRAVITY FEED APPLICATIONS CONTACT FACTORY  
FEED WATER NOT TO EXCEED 85 °F. FOR HIGHER WATER TEMPERATURES CONTACT FACTORY.  
PERFORMANCE @ 70 °F WATER TEMPERATURE, 1.0 SP. GRAVITY.



PERFORMANCE IS BASED ON 3600 (NOMINAL) RPM, 60 HZ MOTOR. THESE PUMP CURVES AND ANY INDIVIDUAL CURVES, WHICH ARE AVAILABLE UPON REQUEST, ARE TYPICAL ONLY AND ARE NOT GUARANTEED AS MINIMUM PERFORMANCE. IF EXACT FLOW AND PRESSURE ARE REQUIRED, A CERTIFIED CURVE MAY BE ORDERED AT ADDITIONAL COST IF ACCOMPANIED BY AN ORDER AND ONLY AFTER PUMP HAS BEEN TESTED.

MANUFACTURED BY : T&T PUMP Co. INC.  
9/23/98 RT 8 Box 343  
FAIRMONT, WV 26554



SPECIFICATIONS SUBJECT TO  
CHANGE WITHOUT NOTICE